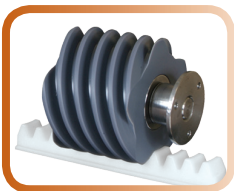




Features & Benefits

- Just 10.5" wide folded—the industry's narrowest
- Patented helical worm drive is smooth and energy-efficient
- DC drive even runs during power interruptions
- Clean installation and maintenance.
- Patented Folding Rail option eliminates obstruction at stair base (optional)
- Powerful enough to travel up to a 52° incline
- Includes 2 wireless remotes
- ETL Listed - 3148125
- Additional seat colors available



The energy-efficient patented worm drive requires no greases or lubricants.



Safety sensors on carriage and platform stop the lift instantly at obstacles.



An industry first, automatic fold design eliminates obstructions at the bottom of the stairway. (optional)

The World's Most Compact Stair Lift

Engineered to the highest industry standards, Pinnacle stair lifts are designed for optimal comfort, convenience and aesthetics. Space-saving Pinnacle folds to 10.5 inches, making it the narrowest lift on the market. And its patented helical worm gear drive generates the smoothest, safest and most energy-efficient ride available.

Specifications	SL600
Maximum Weight Capacity:	350 lbs. (160 kg)
Overspeed Governor:	Yes
Track (rail) Type:	Clear Anodized Aluminum
Travel:	16' Standard; 70' Maximum (21 m)
Average Number of Return Trips per Charge:	Up to 60
Symmetrical Lift:	Yes (Ships and installs non-handed)
Control in Armrest:	Yes (left or right hand operation)
Need to Open Chassis to Install or Change Sides:	No
Lift Mounts to Steps or Wall:	Steps
Minimum Folded Width:	10.5" (26.7 cm)
Minimum Footrest Height:	3.5" (8.9 cm)
Clear Distance Between Armrests:	19" (48.3 cm)
Floor to Seat Height Low / High:	20" / 24.5" (50.8 / 62 cm)
Minimum Wall to Stair Side of Rail:	6.5" (16.5 cm)
Seat Depth:	16" (40.6 cm)
Backrest Height From Top of Seat:	18" (45.7 cm)
Electrical Requirements:	120–240 VAC
Operation Power:	24V DC Battery
Speed:	20 fpm
Incline Range:	27 - 52°
Drive System:	Helical Worm Gear
Safety Design:	Complies with ASME A18.1, CAN/CSA B44.1, ASME A17.5
Safety Devices:	Centrifugal Overspeed Brake Bi-directional Footrest Obstruction Sensor Swivel Seat Cut-off Switch Final Limits / Seat Belt Chassis Obstruction Switching
Warranty:	3-Year on Components 10-Year on gear rack 1-Year on Batteries